

One Earth Solar Farm

**Volume 6.0: Environmental Impact Assessment and Habitats
Regulations Information [EN010159]**

Environmental Statement Volume 3 – Figure 8.1 – 8.7

September 2025

Document Reference: EN010159/APP/6.20.1

Revision 02 (Tracked)

Infrastructure Planning (Applications: Prescribed Forms and Procedure) Regulations 2009
– Reg 5 (2) (g)

Environmental Statement Volume 3

Figure 8.1 to Figure 8.7

Details of changes made for Deadline 3 of Submission

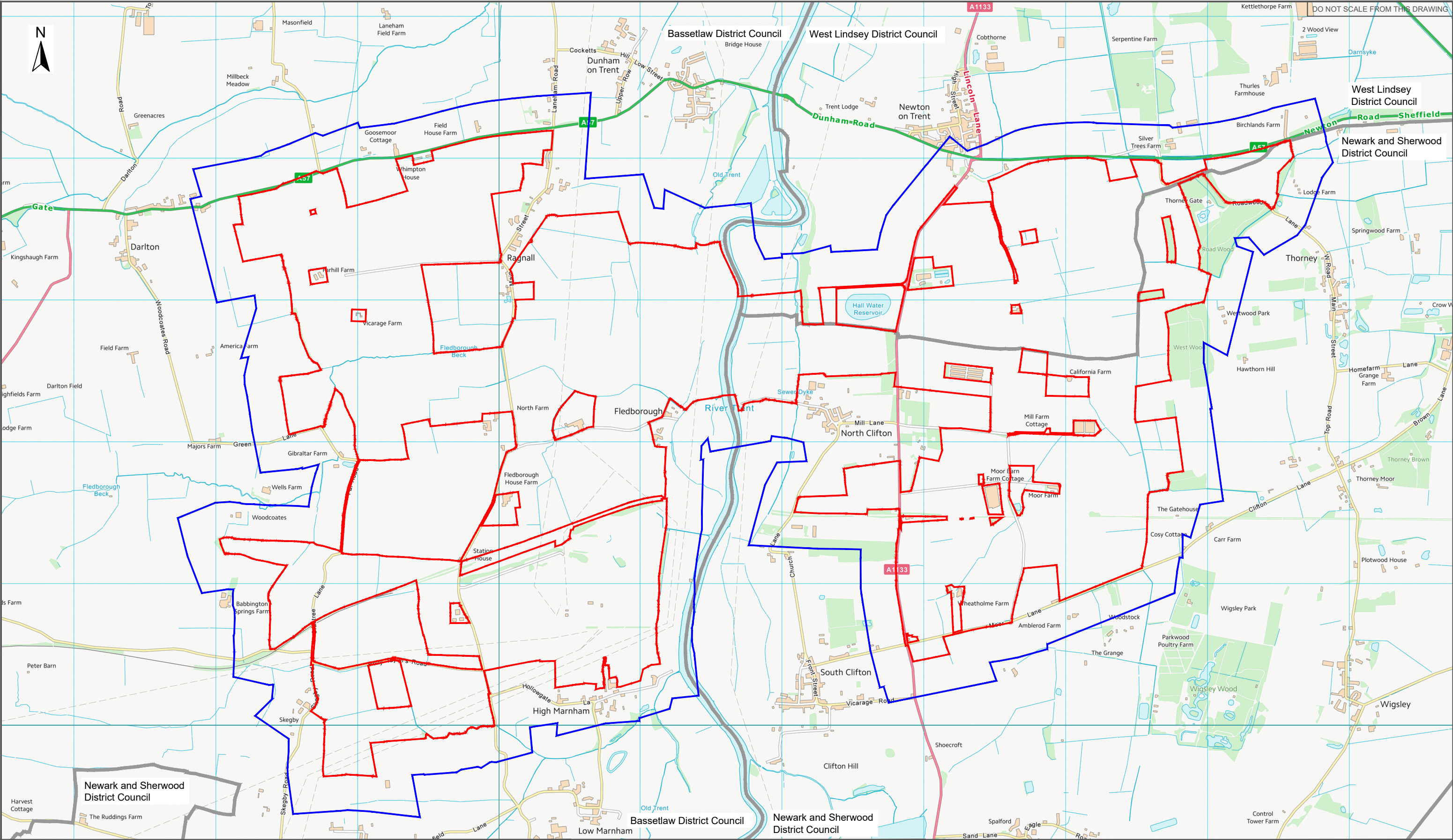
Figure 8.2: Landfill Sites, Waste Management Sites and Sites of Potential Contamination

1. Hatching for landfill sites changed to red, and direction of hatching amended .
2. Boundary of historical landfill site close to Clifton Railway Station buildings amended for accuracy, which shows landfill site is outside Order Limits.
3. Incorrect area of yellow hatching to west of Clifton Railway Station removed.
4. Area of mothballed quarry shown on southern part of drawing removed as outside study area.
5. Groundwater abstraction zones outside study area to the north removed (as these are shown on Figure 8.7, and are not relevant on this drawing).
6. Colour of cross symbols changed to red for 'Location of historical waste management facility (Point location, not site area)'.
7. Colour of plus sign symbols changed to red for 'Location of licensed waste management facility'.
8. Boundary of sewage works facility to north east of Hall Water Reservoir amended, as this was incorrectly shown larger than actual extent.
9. Landfill site to north of High Marnham Power Station is both a landfill site and an area of water treatment works, so is amended to include both red and purple hatching.

Figure 8.7: Groundwater Abstraction Points

Dataset for active groundwater abstraction points has been updated (shown on the drawing as small blue circles).

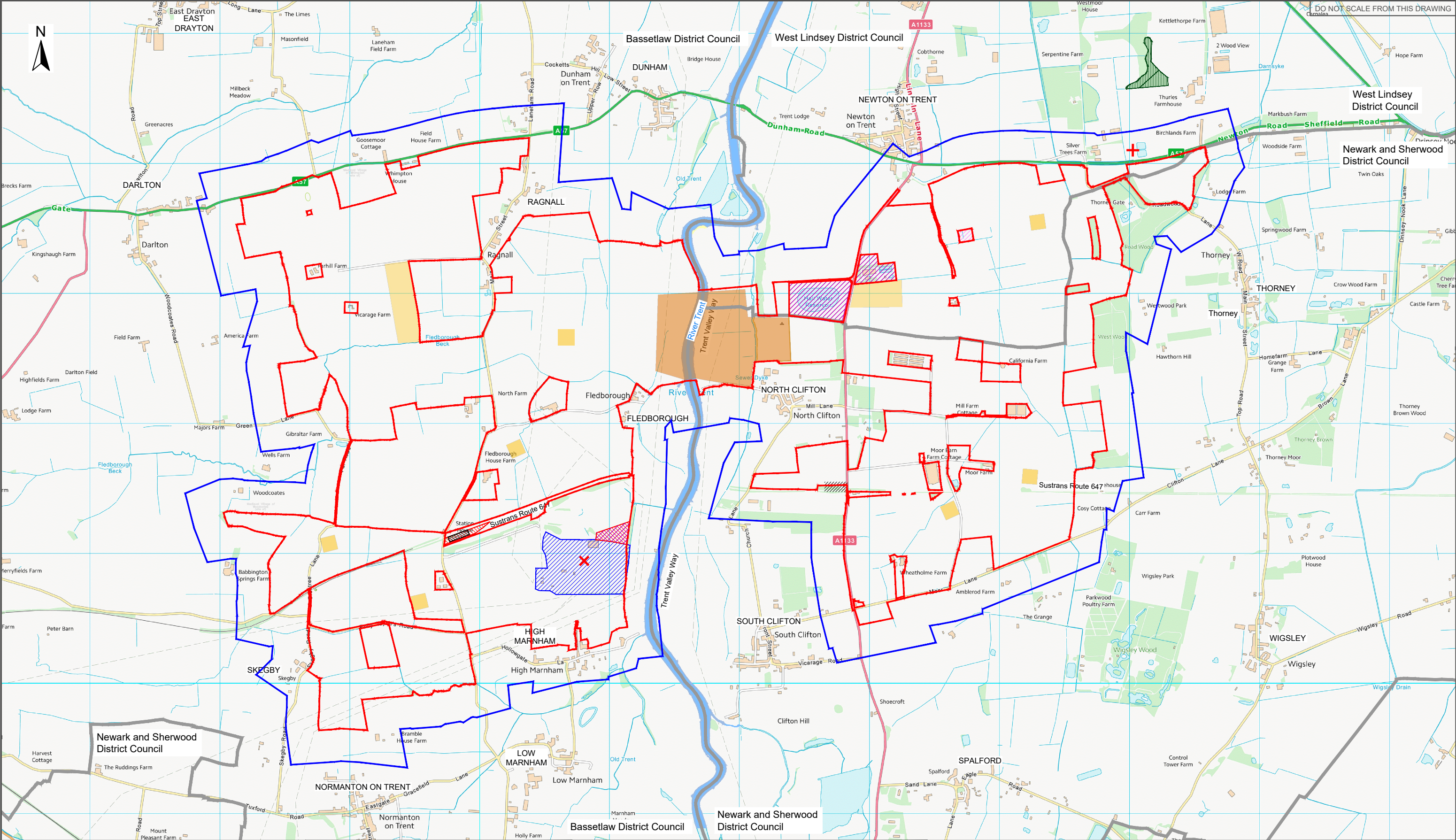
No changes made to **Figure 8.1**, or **Figures 8.3 to 8.6**.



Client	One Earth Solar Farm Ltd
Project Name	One Earth Solar Farm
Planning Inspection Scheme Ref:	EN010159
Environmental Statement Volume-	2

Drawing Title	Figure 8.1 Study Area	
Drawing Number	EN010159/APP/6.20/8.1	Revision
		C02
Drawing Date	10.02.2025	

Legend:
Order Limits
Study Area (250m buffer outside Order Limits)
Boundary of district borough unitary region

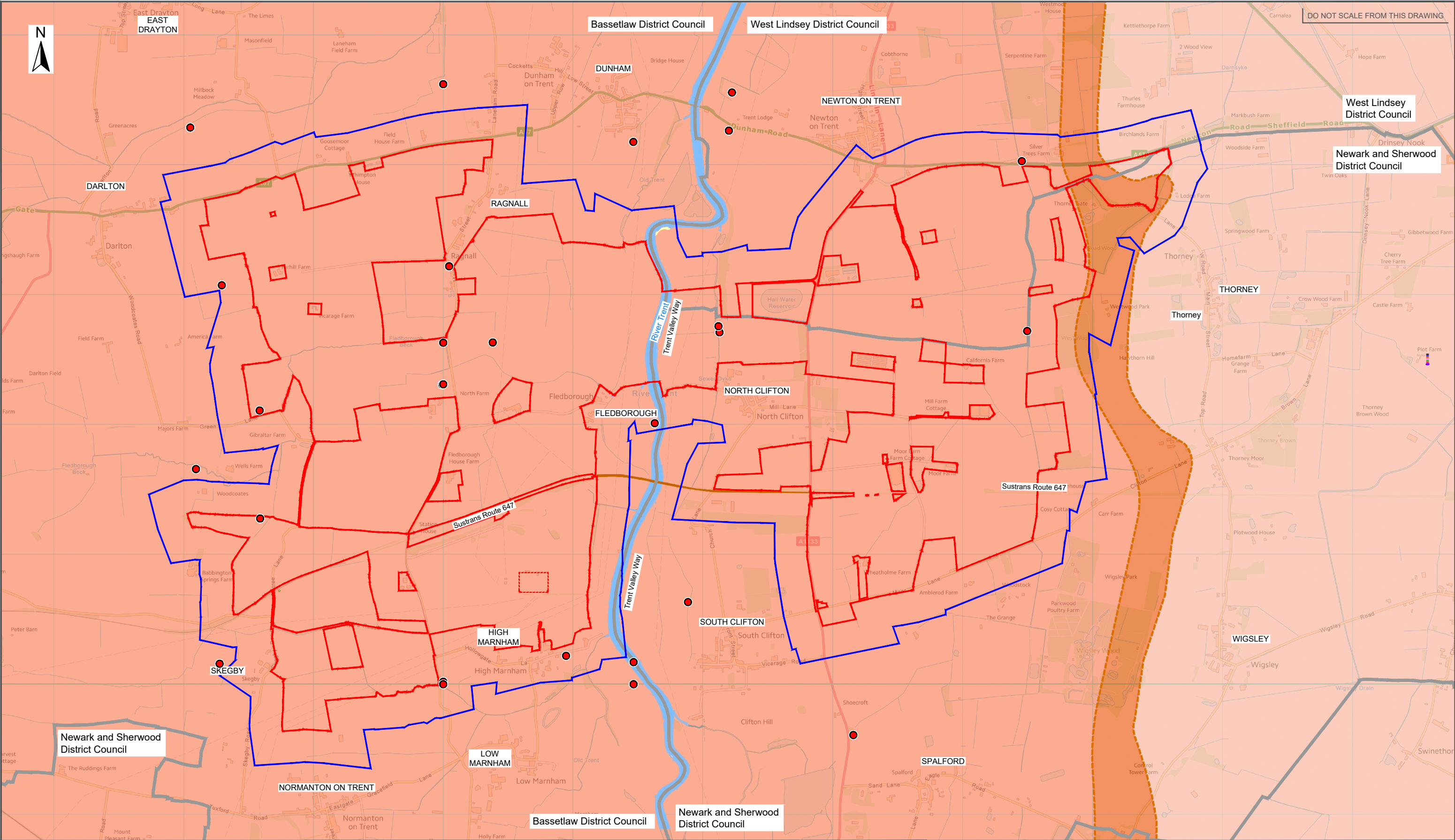




Client	One Earth Solar Farm Ltd			Drawing Title	
Project Name	One Earth Solar Farm			Figure 8.2 Landfill Sites, Waste Management Sites and Sites of Potential Contamination	
Planning Inspection Scheme Ref:EN010159	Environmental Statement Volume-2			Drawing Number	Revision
			EN010159/APP/6.20/8.3	C03	
			Drawing Date	10.02.2025	

Legend:

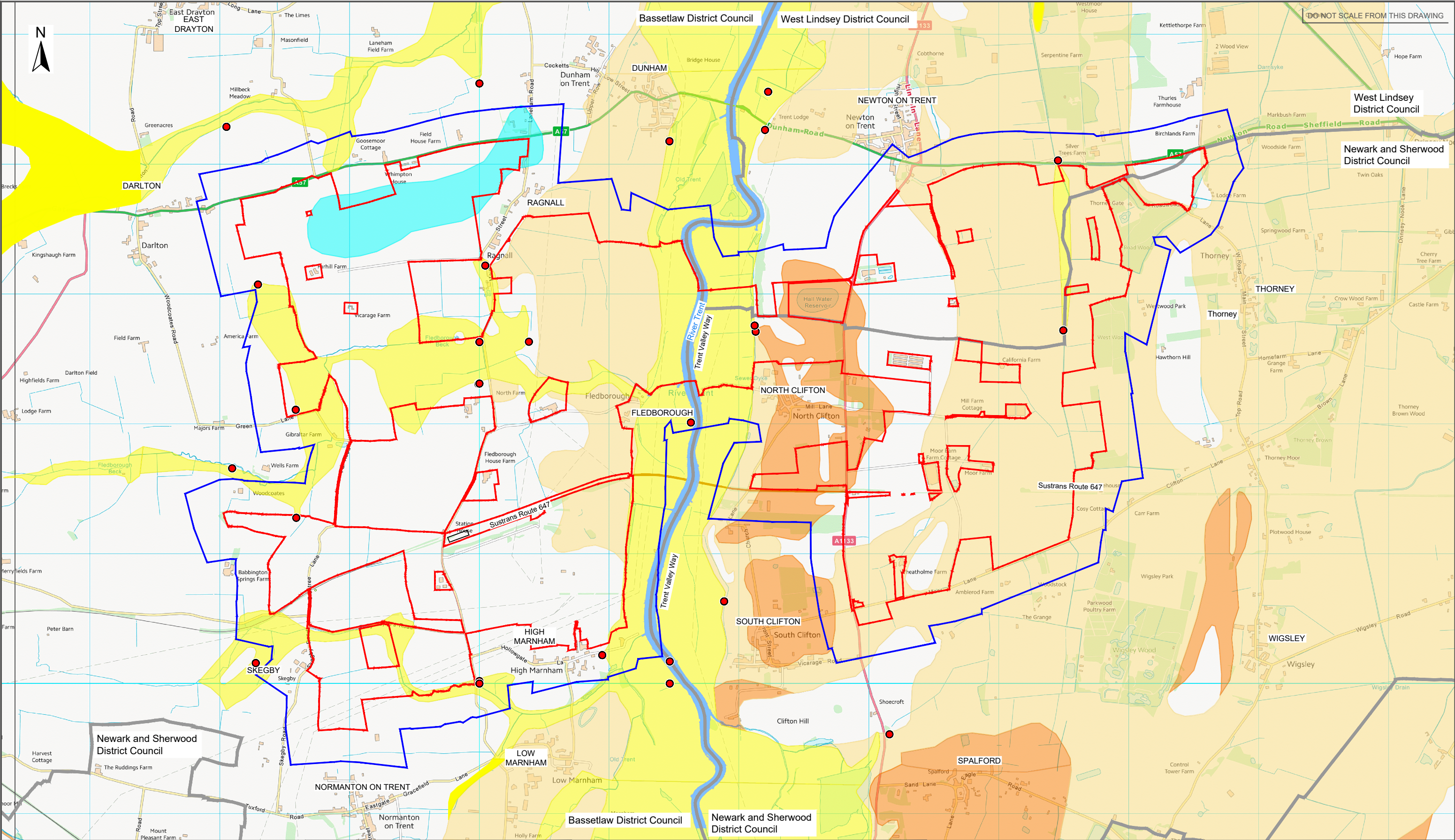
- Order limits
- Route of Historical Railway
- Study Area (250m buffer outside Order Limits)
- Boundary of district borough unitary region
- Location of Historical Railway Station
- Location of High Marnham Power Station
- Location of water treatment works
- Location of oil well compound
- Location of pumping station
- Location of Historical landfill site
- Location of Historical waste management facility (Point location, not site area)
- Location of licensed waste management facility



Client	One Earth Solar Farm Ltd
Project Name	One Earth Solar Farm
Planning Inspection Scheme Ref:	EN010159
Environmental Statement Volume-	2

Drawing Title		Figure 8.3 Bedrock Geological Units and Geological Hazards	
Drawing Number	EN010159/APP/6.20/8.3	Revision	C02
Drawing Date		10.02.2025	

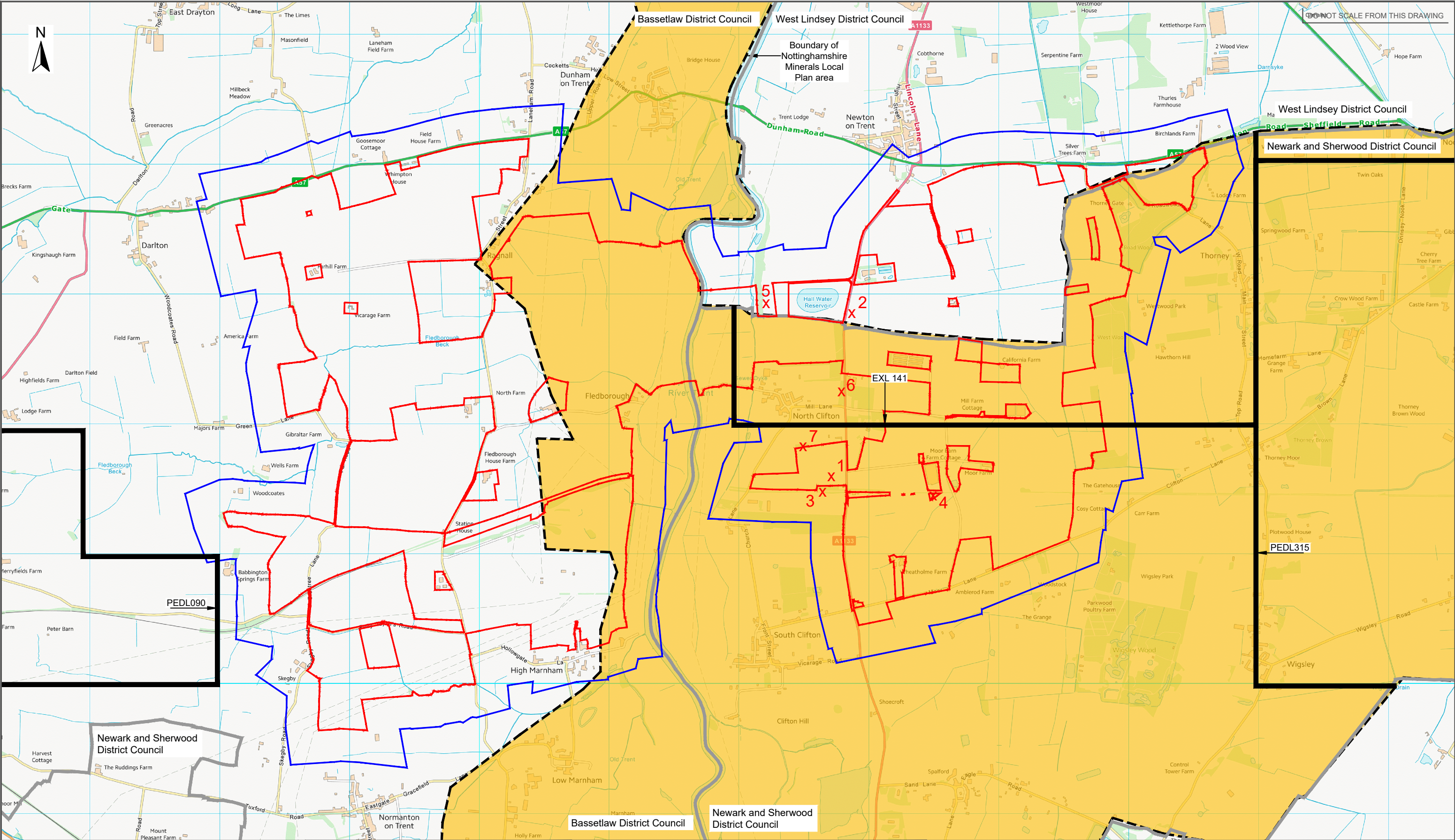
Legend:	
	Order limits
	Study Area (250m buffer outside Order Limits)
	Boundary of district borough unitary region
	Geological hazards from compressible ground (moderate risk)
Bedrock Geology	
	Sandstone Mudstone formation
	Penarth Group - Mudstone
	Mercia Mudstone Group




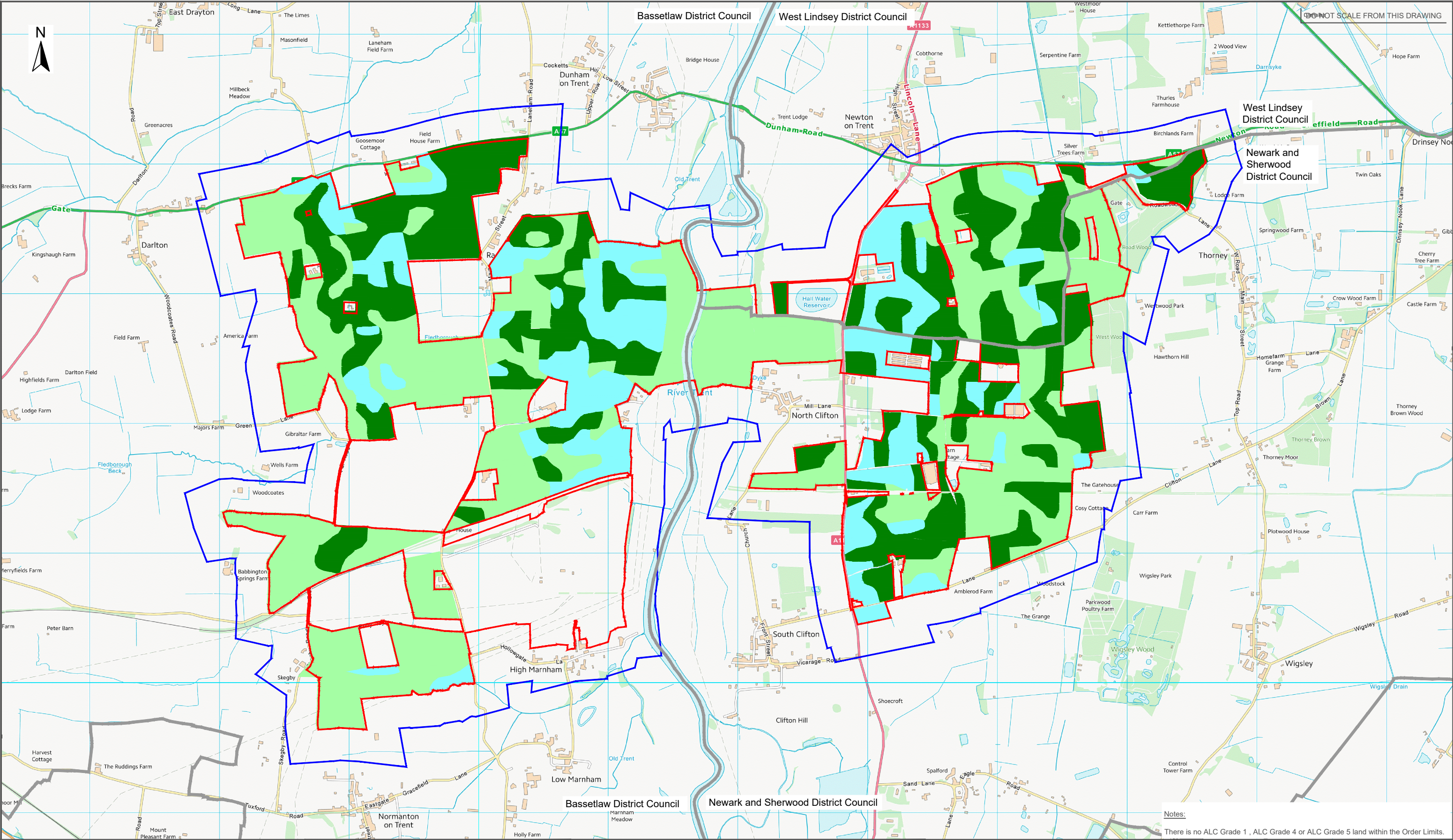
Client	One Earth Solar Farm Ltd
Project Name	One Earth Solar Farm
Planning Inspection Scheme Ref:	EN010159
Environmental Statement Volume-	2


Drawing Title	
Figure 8.4 Superficial Geological Units and Geological Hazards	
Drawing Number	Revision
EN010159/APP/6.20/8.4	C02
Drawing Date	
10.02.2025	

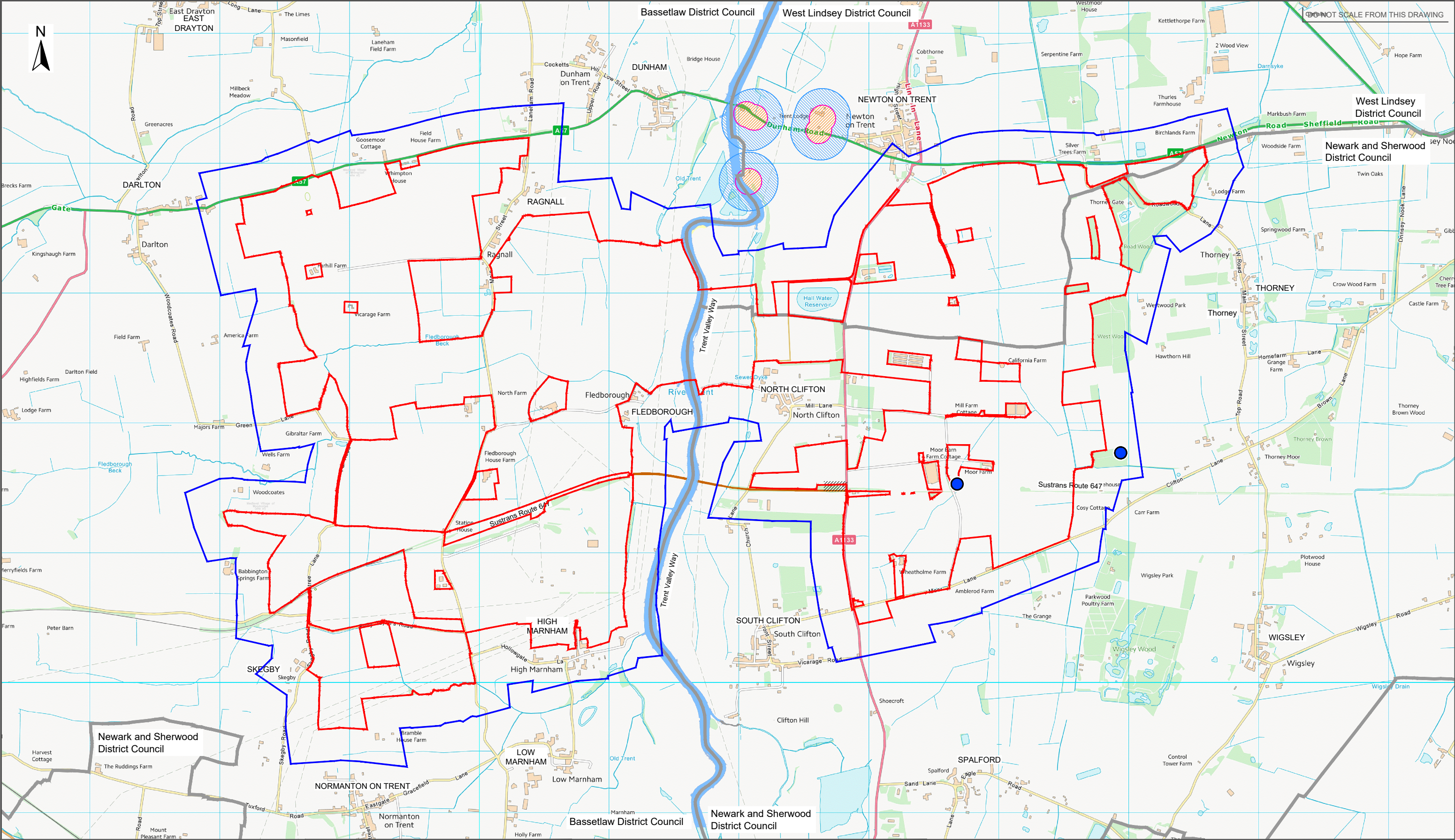
Legend:	
—	Order limits
—	Study Area (250m buffer outside Order Limits)
—	Boundary of district borough unitary region
●	Geological hazards from compressible ground (moderate risk)
Superficial Deposits	
	Alluvium - Clay, Silt, Sand and Gravel
	Holme Pierrepoint Sand and Gravel Member - Sand and Gravel
	Blown Sand - Sand
	Till, Mid Pleistocene, Diamicton




	Client		Drawing Title		<p>Legend:</p> <div><div></div> Order limits</div> <div><div></div> Study Area (250m buffer outside Order Limits)</div> <div><div></div> Boundary of district borough unitary region</div> <div><div></div> Mothballed quarry with permission for further sand and gravel extraction (Girton)</div> <div><div>X</div> Location of historical mineral site</div> <div><div></div> Sand and Gravel Mineral Safeguarding and conciliation area .</div> <div><div></div> PEDL: Petroleum exploration and development licence are; EXL: Exploration licence area</div>	<p>Names of historical mineral site (see section 8.4.25, Chapter 8, Environmental Statement Volume 2)</p> <div>1 - Station Sand Pit</div> <div>2 - Windmill Pits</div> <div>3 - Station Gravel Pit (1)</div> <div>4 - Station Gravel Pit (2)</div> <div>5 - Newton Cliff Quarries</div> <div>6 - North Clifton Pits</div> <div>7 - Hall Farm Pit</div>
	One Earth Solar Farm Ltd		Figure 8.5 Mineral Extraction Sites and Mineral Safeguarding Areas			
	Project Name		Drawing Number			
	One Earth Solar Farm		EN010159/APP/6.20/8.5			
			Revision			
Planning Inspection Scheme Ref:EN010159		C02				
Environmental Statement Volume-2		Drawing Date				
		10.02.2025				



	Client		Drawing Title		<p>Legend:</p> <div><div></div> Order limits</div> <div><div></div> Study Area (250m buffer outside Order Limits)</div> <div><div></div> Boundary of district borough unitary region</div> <p>ALC Grades</p> <div><div></div> 2</div> <div><div></div> 3a</div> <div><div></div> 3b</div>
	One Earth Solar Farm Ltd		Figure 8.6 ALC Survey Results		
	Project Name		Drawing Number	Revision	
	One Earth Solar Farm		EN010159/APP/6.20/8.6	C02	
	Planning Inspection Scheme Ref:EN010159		Drawing Date		
Environmental Statement Volume-2		10.02.2025			



	Client	Drawing Title		<p>Legend:</p> <p>Order limits</p> <p>Study Area (250m buffer outside Order Limits)</p> <p>Boundary of district borough unitary region</p> <p><u>Groundwater abstraction source protection zones</u></p> <p>Outer zone-subsurface activity only (Zone 2c)</p> <p>Inner zone-subsurface activity only (Zone 1c)</p> <p>Active groundwater abstraction points</p> <p><u>Notes:</u></p> <p>Data on groundwater abstraction points was provided by the Environment Agency (reference EIR2025/17939). Grid references were not provided for four Anglian Water abstraction points that are located outside the Order Limits but within 1km of the boundary, so it has not been possible to show the positions of these points on this drawing.</p>
	One Earth Solar Farm Ltd	Figure 8.7 Groundwater Abstraction Points		
	Project Name	Drawing Number	Revision	
	One Earth Solar Farm	EN010159/APP/6.20/8.7	P06	
	Planning Inspection Scheme Ref:EN010159	Drawing Date		
Environmental Statement Volume-2	18.08.2025			